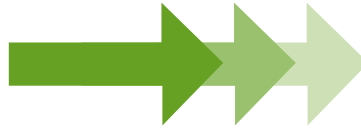
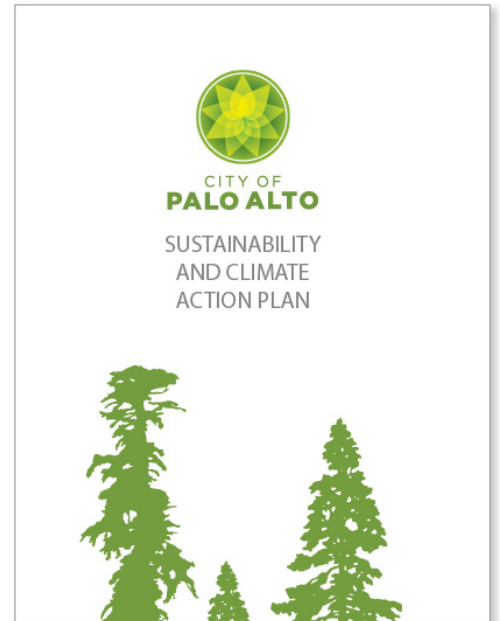


How Will the **Comprehensive Plan Update** & the **Sustainability & Climate Action Plan** Work Together?



Palo Alto's Comprehensive Plan Update and the Sustainability and Climate Action Plan are being prepared in parallel and will both address issues related to sustainability.



Palo Alto's **Comprehensive Plan Update** and the **Sustainability and Climate Action Plan (S/CAP)** are being prepared in parallel and will both address issues related to sustainability, including reducing greenhouse gas (GHG) emissions and single occupant vehicle trips, conserving energy, water, and other natural resources, and adapting to expected changes in climate and resulting impacts such as sea level rise, drought, increased flooding and fire risk, etc. The following points describe how these two concurrent planning efforts interact with each other.

The **Comprehensive Plan Update** will embrace principles of sustainability via new goals, policies, and implementation programs, particularly in the Transportation, Land Use & Community Design, Natural Environment, and Safety elements of the updated plan. A subcommittee of the Citizens Advisory Committee has been formed to work across elements on this issue. Also, the use of icons or a special section in the final plan can allow readers

to find goals, policies, and programs related to sustainability and climate change adaptation wherever they occur in the document.

The **Comprehensive Plan Update** will describe the intent and scope of the **Sustainability and Climate Action Plan** and explicitly incorporate the plan by reference, similar to how other important community plans will be referenced (e.g. the Baylands Master Plan; the Local Hazard Mitigation Plan; the Parks, Trails and Open Space Master Plan; the Urban Forest Master Plan, etc.).

As a more focused plan, the **Sustainability and Climate Action Plan** will be much more specific than the **Comprehensive Plan Update** when it comes to strategies for reducing greenhouse gas (GHG) emissions and for addressing other sustainability-related topics. The **Sustainability and Climate Action Plan** will also look out farther than the **Comprehensive Plan Update** horizon year of 2030.

Both the **Comprehensive Plan Update** and the **Sustainability and Climate Action Plan** will require review pursuant to the California Environmental Quality Act (CEQA) and the Draft Environmental Impact Report (EIR) that is being prepared for the **Comprehensive Plan Update** will contain a conservative (i.e. probably high) forecast of community-wide GHG emissions in the year 2030. The **Sustainability and Climate Action Plan** will be more aspirational in assuming aggressive emission reductions.

Finalization, adoption and implementation of the **Sustainability and Climate Action Plan** will be included as a mitigation measure in the **Comprehensive Plan Update** Draft EIR to ensure that the City meets or exceeds the State's targets for GHG emission reductions in 2030 and 2050.

Interested in helping craft solutions to the critical issues facing us now and into the future? Join us at the Sustainability and Climate Action Summit: www.cityofpaloalto.org/scapreg